

**automotive links:**

- optoA2B
- optoCAN-FD / -SW / -LS / -HS
- optoLIN / -K
- optoFlex
- optoSENT
- optoPSI5
- optoDSI3
- opto5x (CAN-FD / LIN / others)



**industry / consumer links:**

- optoTMD5-AV
- optoUSB 2.0 / 3.X
- optoRS232
- optoRS485
- optoLAN 100/1000BASE-TX



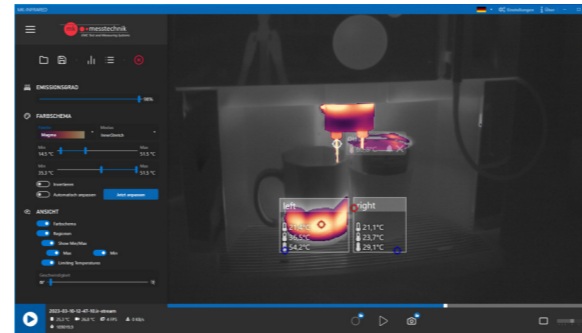
**automotive Ethernet links:**

- optoLAN 10GBASE-T1
- optoLAN 10GBASE-TX
- optoLAN 1000BASE-T1
- optoLAN 100BASE-T1
- optoLAN 3x100BASE-T1
- Media Converter 10GBASE-T1 <-> TX 100/1000BASE-T1 100BASE-T1



**camera systems:**

- Full HD camera (10x, 20x, 30x zoom and  $\mu$ )
- 4K quad multi viewer
- 4K camera
- IR camera
- mk-motion motion detection software
- recording software
- full compatible Surveillance Line
- Basic Line and Low Price Line for cost saving
- various mountings for cameras



**Dies ist nur ein kleiner Ausschnitt aus unserem Angebot. Vermissen Sie etwas? Oder benötigen Sie eine spezielle Anpassung? Wenden Sie sich einfach an unser Verkaufsteam für eine fachkundige Beratung.**

This is just a small cross-section of our products. Are you missing anything? Or do you need a special customisation? Simply contact our sales team for expert advice.

**LVDS links:**

- optoLVDS
  - optoCML (GMSL 2 / GMSL 3)
  - optoAPIX2 / 3
  - optoLVDS (FPD III / FPD IV)
- optical links for LVDS or GMSL signals with different chipsets (Maxim, TI, ADI, SONY, Inova ...)  
optional integration of POC, wake or other signals



**analog/digital links:**

- optoTTL (1 - 16 channels) transmission of analog signals from 1 to 16 channels from DC to 100 kHz ... 30 MHz



**accessories:**

- customised cables shielded and unshielded (RosenbergerHSD®, H-MTD®, IX40, MATEnet Nano MQS)
- optical fibres different length & connectors (FSMA, ST, FC, ...)
- multi channel chargers
- (un-) regulated power supplies
- intercom (TRX systems & chamber speakers)
- LED chamber lights (scalable, easy installation)